

PROJECTORS



PORTO S/M



Sports areas



Monument lighting



Stations and parking



Tunnels



Logistics platforms and industrial areas



Parks, gardens and monumental areas

PORTOS/MHISPALED





Simple and functional LED floodlight for outdoor lighting

ROBUSTNESS AND FUNCTIONALITY

The Porto series floodlights are a simple and versatile solution for outdoor lighting applications, tunnels, parking lots, sports areas or ornamental lighting.

Its robust design and easy adaptation make it a multi-purpose projector that provides cost-effective and optimized solutions in scenarios that require the use of intermediate powers.

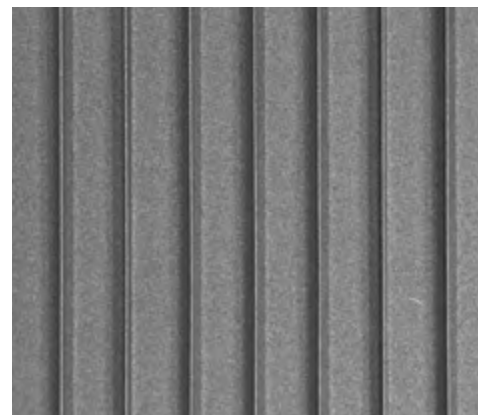


The Porto floodlight offers solutions of up to 400W of power, guaranteeing optimum results in a multitude of scenarios, such as sports areas, tunnel lighting, parking lots, logistics platforms, industrial areas or ornamental lighting.

Its robust design, with die-cast aluminum structure and finned cover, and a high degree of tightness and impact protection, guarantees high reliability and durability over time. It is suitable for post-top or side-entry mounting, allowing tilt adjustment to adapt perfectly to the lighting needs of each track. It offers multiple lighting packages, with a wide range of photometric distributions, operating currents and dimming possibilities.

TECHNICAL DATA SHEET

CE; RoHS; EN 60598-1:2009 + A11:2009; EN 60598-2-5; EN 62031:2009 + A1:2011; EN 62471:2008; IES LM-80; EN 61347-1:2008; EN 61347-2-13:2006; EN 55015:2006 + A1:2007 + A2:2009; EN 61547:2009; EN 61000-3-2:2006 + A1:2009 + A2:2009; EN 61000-3-3:2008; EN 61000-4-2,3,4,5,6,8,11; UL 8750; IEC 60598-1:2008; IEC 60598-2-3:2002; IEC 62031:2008; IEC 62471:2008; IES LM-80; IEC 61347-1:2008; IEC 61347-2-13:2006; IEC 55015:2006; + A1:2007 + A2:2009; IEC 61547:2009; IEC 61000-3:2006; A1:2009 + A2:2009; IEC 61000-3-3:2008; IEC 6100-4-2,3,4,5,6,8,11; UL 8750;



TECHNICAL DATA SHEET

PORTO S/M

PROY. PORTO S/M

SPECIFICATIONS

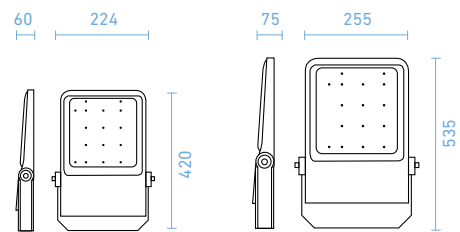
Structure	Aluminum injection
Diffuser	Tempered glass/polycarbonate
Dimensions and weight	S: 420x224x60 mm / 7 Kg M: 535x255x75 mm / 11 Kg
Anchoring systems	Projector support (swivel angle marked on the bracket)
Degree of protection	IP66, IK08, IK10 optional
Warranty	5/7/10 years
Certification	CE; RoHS
Safety class	I/II

OPTIONAL CONTROL SYSTEMS

Programmable regulation of up to 8 levels
 Time programming module
 (35 programs | reprogrammable from CM | winter-summer distinction)
 Point to point remote management RFLight₂
 DALI2/D4i, 1 -10V
 CLO (constant light level)
 Dimming at the head-end
 Control line dimming
 Photocell
 Socket NEMA 7 / Zhaga book 18
 Others: PLC, GPRS, 3G, NFC, NFC, Bluetooth, Narrow Band 5G

FEATURES*

Power	S: 10W-200W M: 140W-400W
Efficiency lm/W	Up to 170 lm/W
Input voltage	90-305 V / ~ 50-60Hz (depending on model)
Power supply	PF > 0.95, Efficiency > 88% (depending on model)
Lifetime	>100,000 hours (L90B10)
LED Type	Cree®, Nichia®, Osram®
Color temperature	1,800 K - 6,000 K / PC-Amber / RGB
Minimum CRI	70/80
FHS	0%



VERSIONS*

ECO

STANDARD

PREMIUM

- Included
- Optional
- ✗ Not available

OVERVOLTAGE PROTECTION

10 kV (en f. alim.)	●	✗	✗
10 kV (SPD ext.)	✗	●	●
20 kV (SPD ext.)	✗	○	○

REGULATION

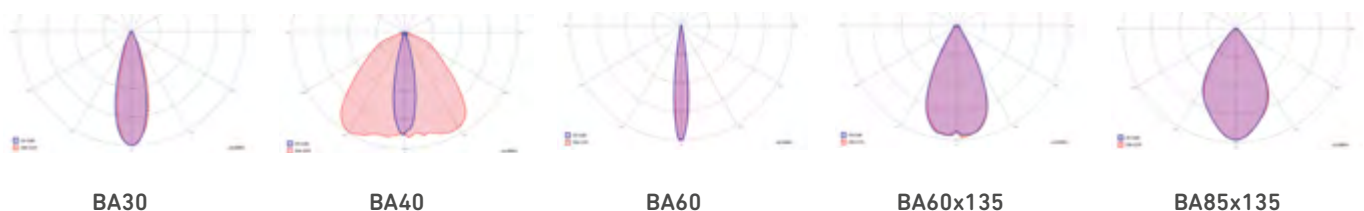
8 Levels	●	●	✗
MPH (reprogrammable)	✗	○	●

OPERATING CURRENT

500 mA	○	○	●
700 mA	○	●	○
1000 mA	●	○	○

OPTICAL BLOCK

(Consult for more optical options)



* Specifications are subject to change



GALICIA
TUNNEL (A CORUÑA)
Installation of Porto projectors by Hispaled