

RFLIGHT₂ A different city



RFLight₂

INTEGRAL MANAGEMENT OF STREET LIGHTING
PLATFORM RFLight₂

INTEGRAL IOT MANAGEMENT PLATFORM FOR SMART CITY APPLICATIONS

“ HispaLED is a 100% Spanish company and a pioneer in the development of remote management solutions for street lighting. We support our clients in the supply and preparation of tenders. We are proud to be the first company in the world to develop a street lighting system based on LoRa technology with a mesh network topology, known as LoRaMesh. ”

HISPALED: A DIFFERENT VISION, A GLOBAL VISION

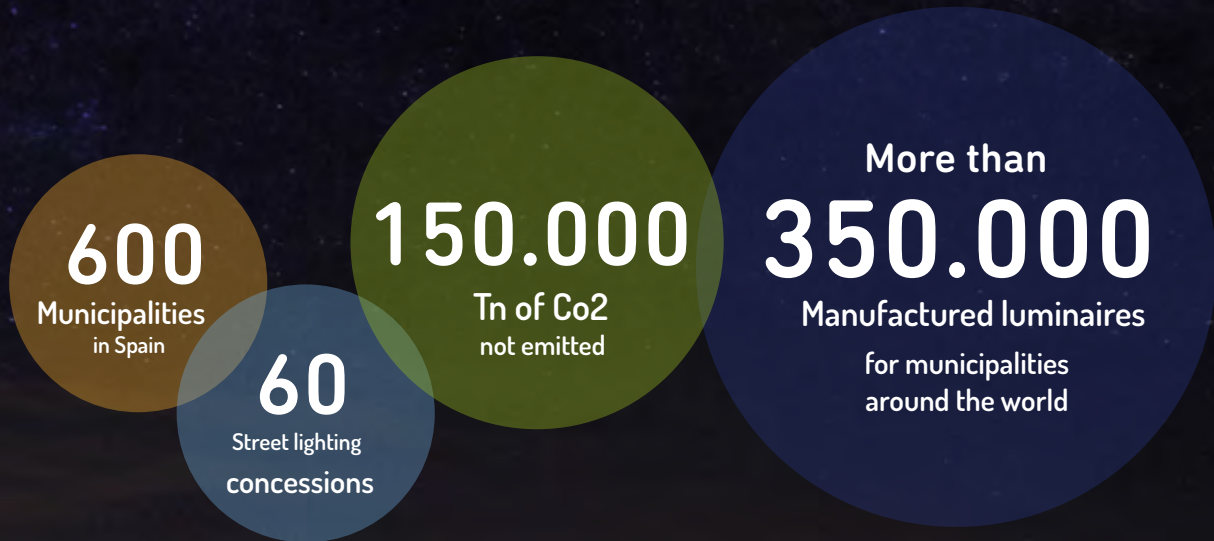
WE ARE MANUFACTURERS:

Our factories, located in Ordes (La Coruña) and Madrid-Vicálvaro, are equipped with state-of-the-art technical resources and the technology required to meet the demands of an increasingly complex and demanding global market. HISPALED has its own hardware and assembly departments, which ensure the highest product quality and short lead times.



MADRID
Offices/Factory

CORUÑA
Factory



Exports to Europe, Latin America, Asia and Africa

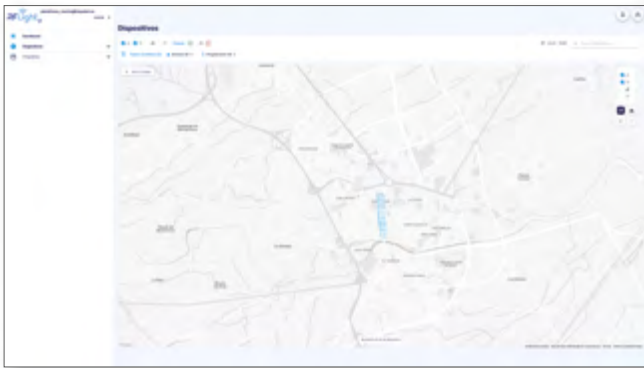
We have launched major street lighting projects in Latin America (Chile, Colombia, Peru, etc.), Europe (the United Kingdom, etc.), Africa (Morocco, etc.) and Asia (Lebanon, etc.)



HispaLED street lighting
Ayto. Murcia. España

RFLIGHT₂ WEB, AN OPEN MANAGEMENT PLATFORM

RFLight₂ Web It serves as the central hub for all Smart City data. Both the command centre control units and the streetlight nodes, as well as the RFLight₂ Geo tool, send their data via standard protocols to the cloud, from where it is forwarded to the Hispaled platform. This is a unique feature of our products and our platform: **IT IS A COMPLETELY OPEN ARCHITECTURE.**

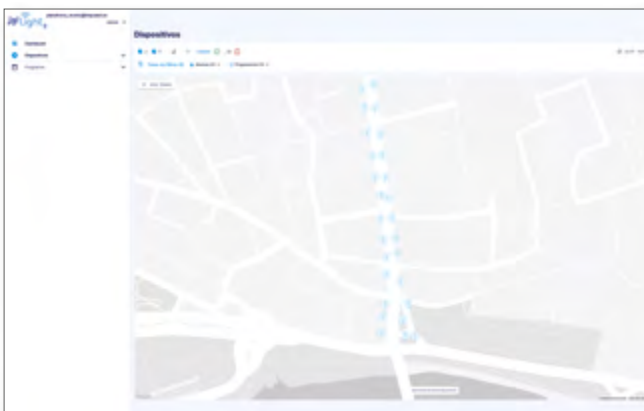


DATA AVAILABLE FOR ANY PLATFORM

We are convinced that any customer wishing to monitor and control their lighting system, whether public or private, can choose from a range of options. Of course, these do not all have to come from the same equipment or service provider. That is why we send the data to the cloud. This ensures it is available to city managers from any platform.

DATA INTEGRATION FROM ANY MANUFACTURER

Similarly, we are confident that many local authorities will choose the RFLight₂ platform to manage their street lighting. However, not all luminaires or control centres may be manufactured by Hispaled. We have a large number of successful case studies involving remote management systems for third-party control panels or luminaires.



INTEGRATION OF OTHER ELEMENTS OF THE CITY

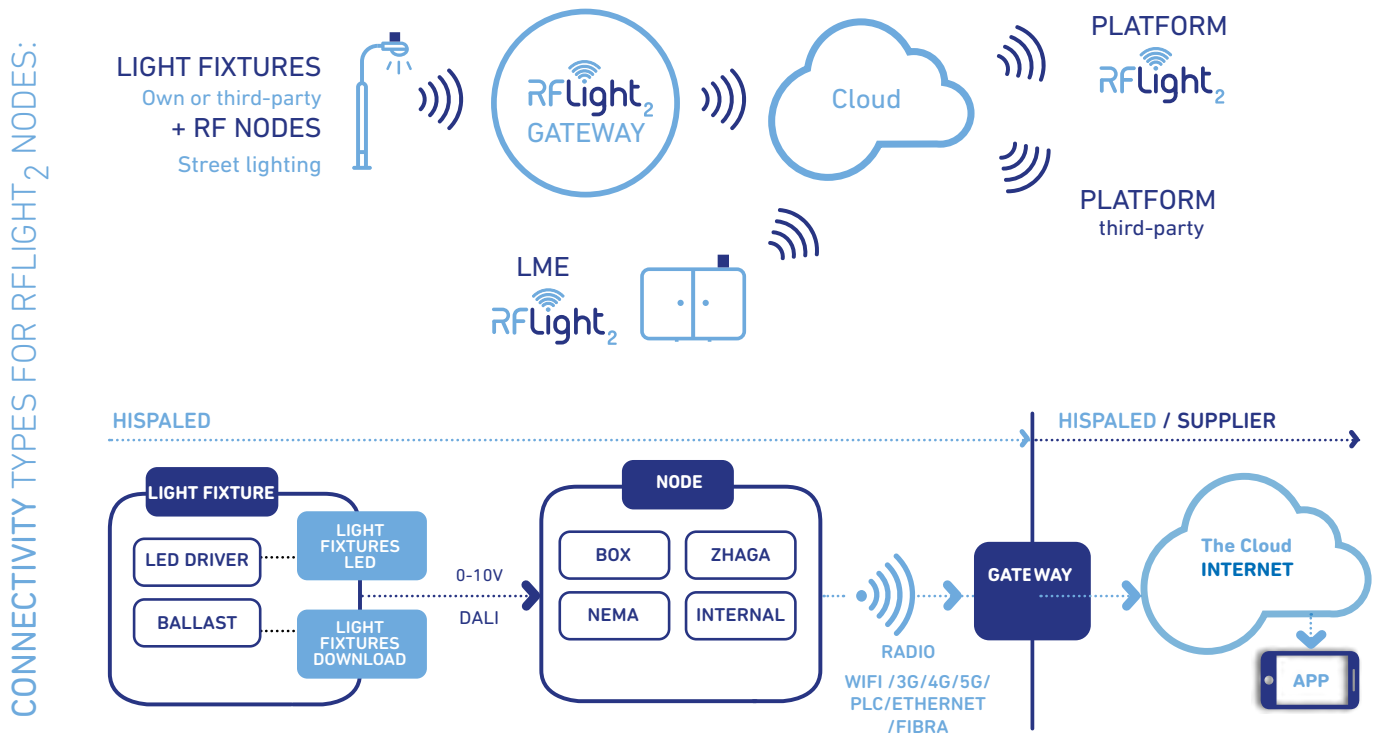
Currently, most manufacturers of urban data-measuring equipment have, or will have, internet connectivity. For example, air quality or noise monitoring stations, irrigation systems, car park occupancy systems, etc. can be integrated into the RFLight₂ platform.

TECHNICAL SPECIFICATIONS OF THE RFLIGHT₂ PLATFORM:

HispaLED's RFLight₂ nodes for street lighting incorporate the very latest communications technologies: radio frequency, narrowband, 3G/4G, PLC, etc., enabling us to adapt to any technical solution required by the local authority.

Depending on their CONNECTIVITY, we distinguish between two types of HispaLED RFLight₂ nodes:

RADIO FREQUENCY NODES (LoRa)



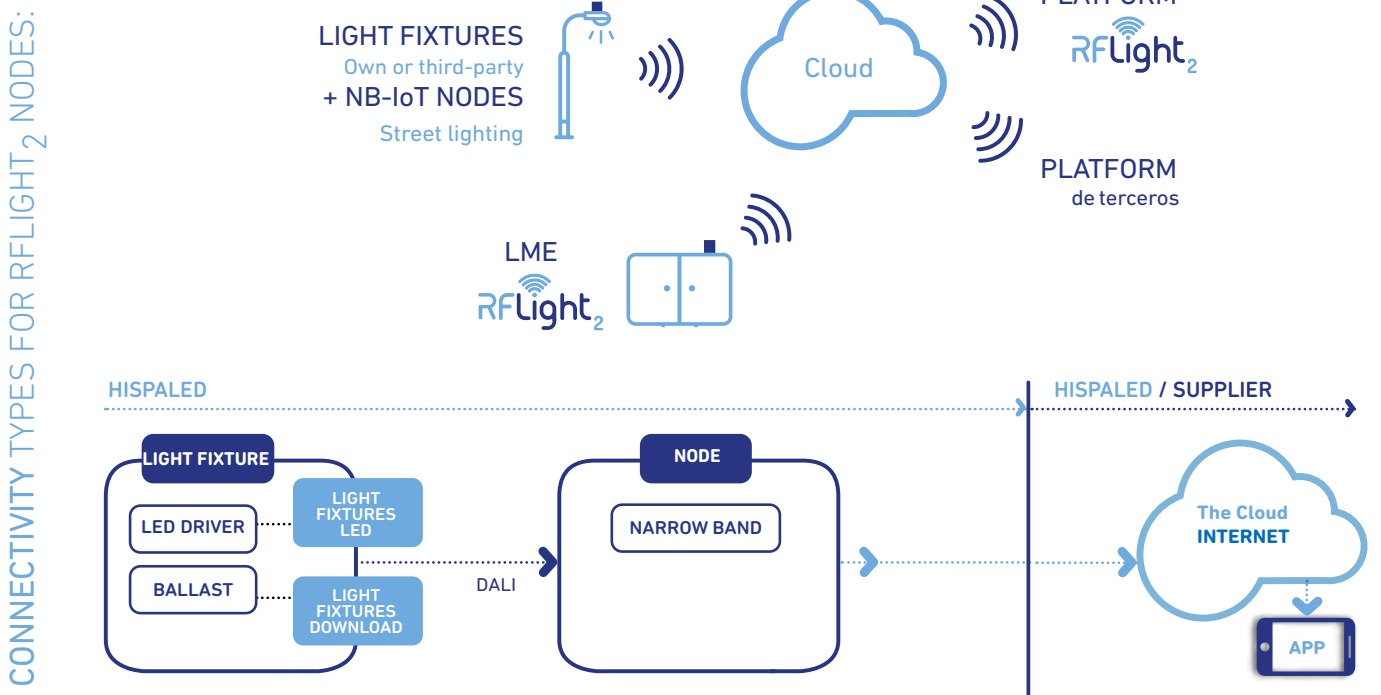
The streetlights form a communications network in which each streetlight acts as a node. Each of these nodes is capable of sending or receiving information to or from any other node.

Working in the cloud offers key advantages: automatic scalability, greater availability and reduced infrastructure costs. It also ensures robust security, regular updates and global accessibility. This enables systems to be flexible and efficient, adapting to market demands without the need for hardware modifications.

A PLATFORM WITH AN INTUITIVE DESIGN THAT WORKS ON ANY DEVICE

RFLight₂ enables remote management of luminaires from both HISPALÉD and other manufacturers, and integrates with any web platform – whether in-house or third-party – from which to control lighting panels and individual luminaires, offering endless possibilities and providing real-time data.

NARROW BAND NODES



DIFFERENCES

The main difference lies in synchronisation:

- **RADIO FREQUENCY (LoRa)** nodes operate **ASYNCHRONOUSLY**.
- **NARROW BAND** nodes operate **SYNCHRONOUSLY**.
This means they allow the luminaire to be controlled in **REAL TIME**.

IT INTEGRATES WITH ANY WEB PLATFORM, WHETHER IN-HOUSE OR THIRD-PARTY

RFLight₂ enables the remote management of luminaires from both HISPALED and other manufacturers, and integrates with any web platform – whether in-house or third-party – from which to control lighting panels and individual luminaires, offering endless possibilities and providing real-time data.

RFLight₂
Platform
with an
intuitive
and accessible
design

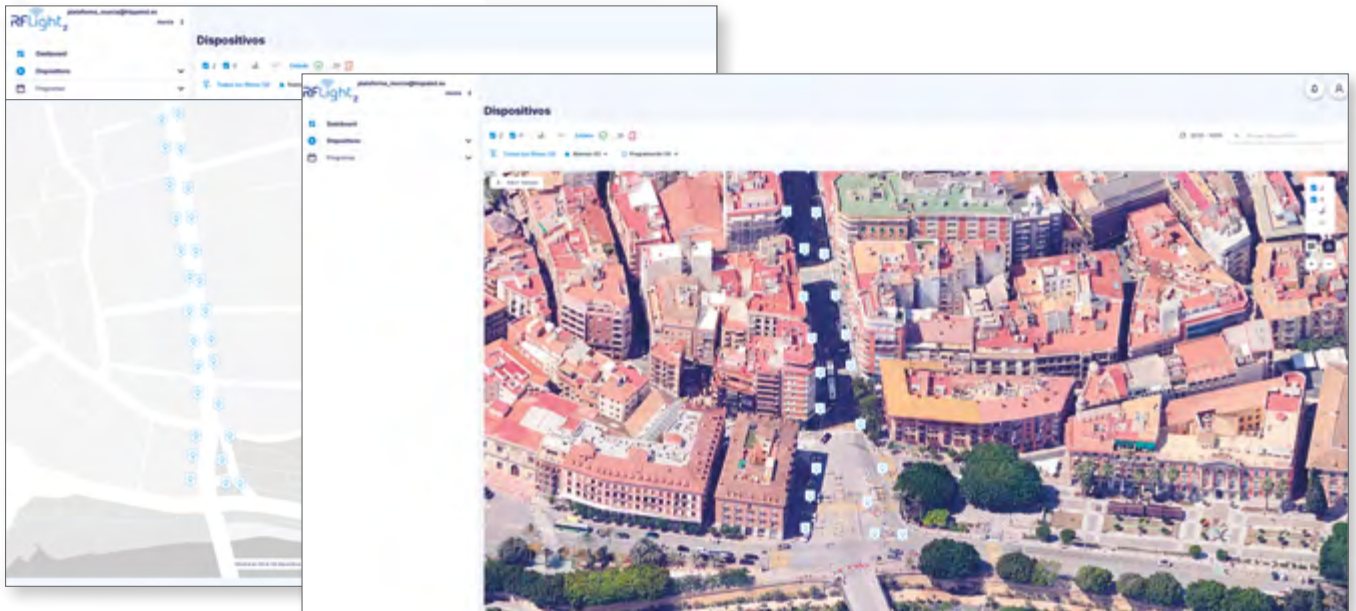
-  Overview of the Installation
-  Control and programming of lighting
-  Monitoring of panels
-  Maintenance management
-  Reporting Tool
-  Installation Tool
RFLight₂ GEO/Inventory
-  IoT Integration/
Smart City Verticals

A PLATFORM WITH AN INTUITIVE DESIGN THAT WORKS ON ANY DEVICE

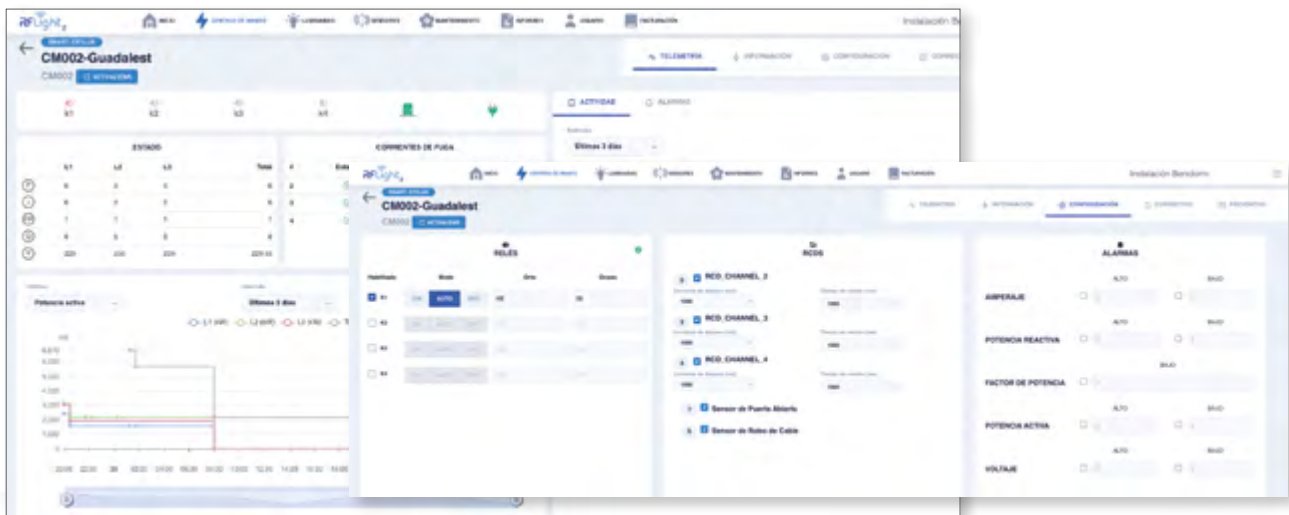
VERTICAL LIGHTING FEATURES

The RFLight₂ software platform enables comprehensive management of the municipality's street lighting, covering both the luminaires and the control centres. From a single point of access, it manages the registration of light points, inventory, asset management, user configuration, customisable reports and maintenance of the installation.

- OVERVIEW OF THE INSTALLATION

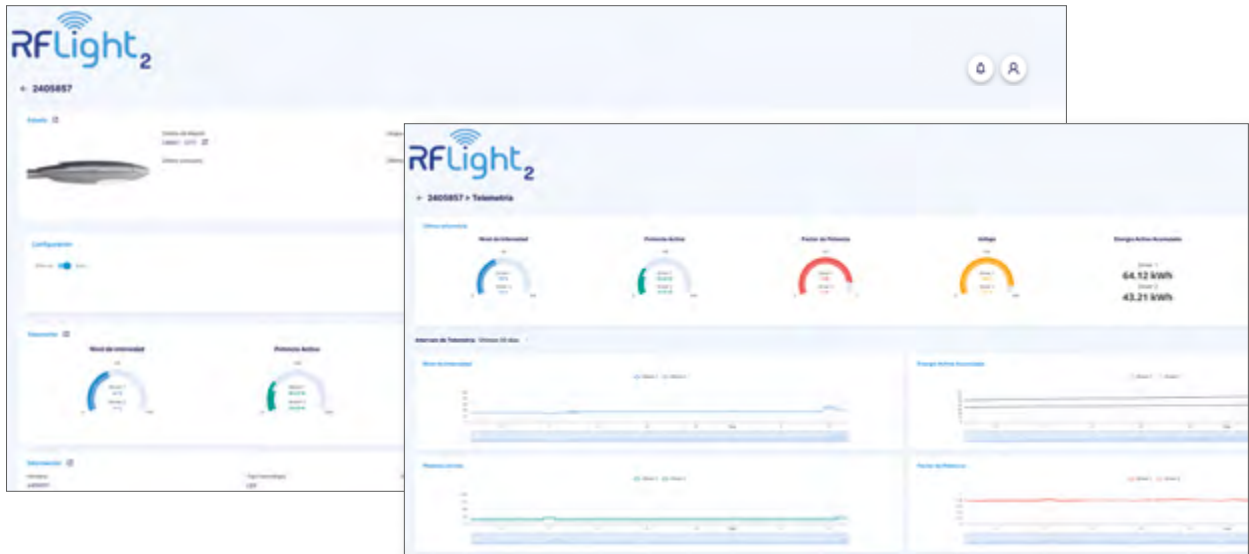


- PANEL CONTROL



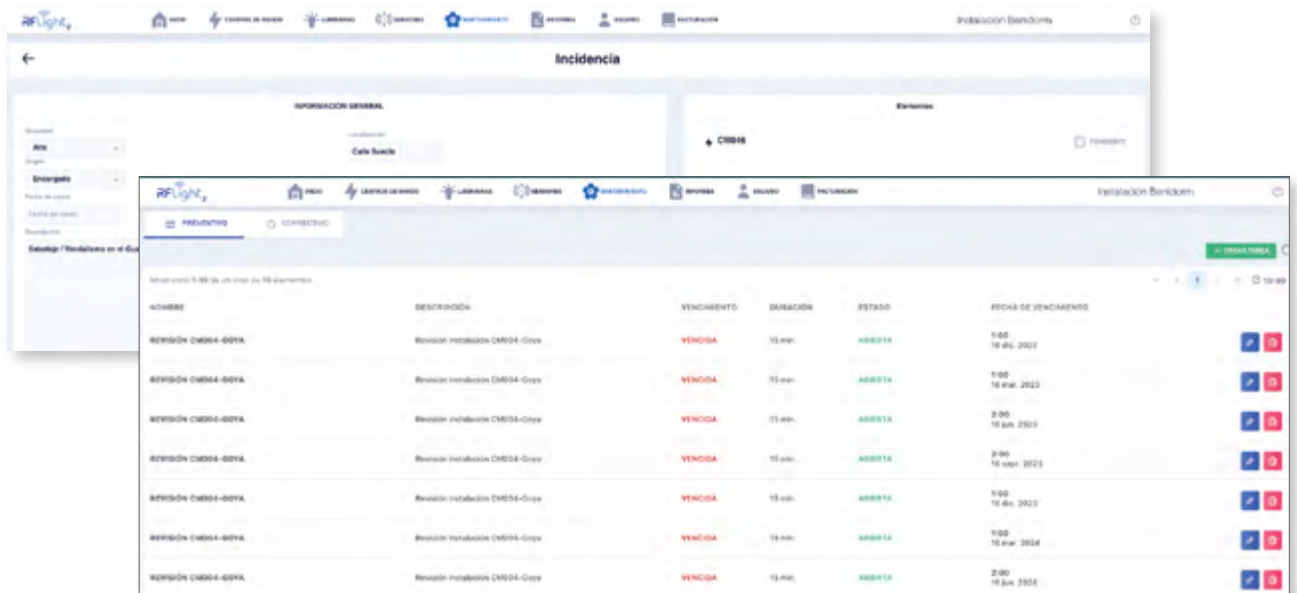
The RFLight₂ platform is used to control the various elements of the control panel via a header, and energy indicators are measured using analysers, with this information being recorded in the cloud for subsequent use and analysis.

• LIGHTING CONTROL AND PROGRAMMING



RFLight₂ enables individual or group control of lighting fixtures through the creation of dimming schedules and timetables using both radio frequency and narrowband technology

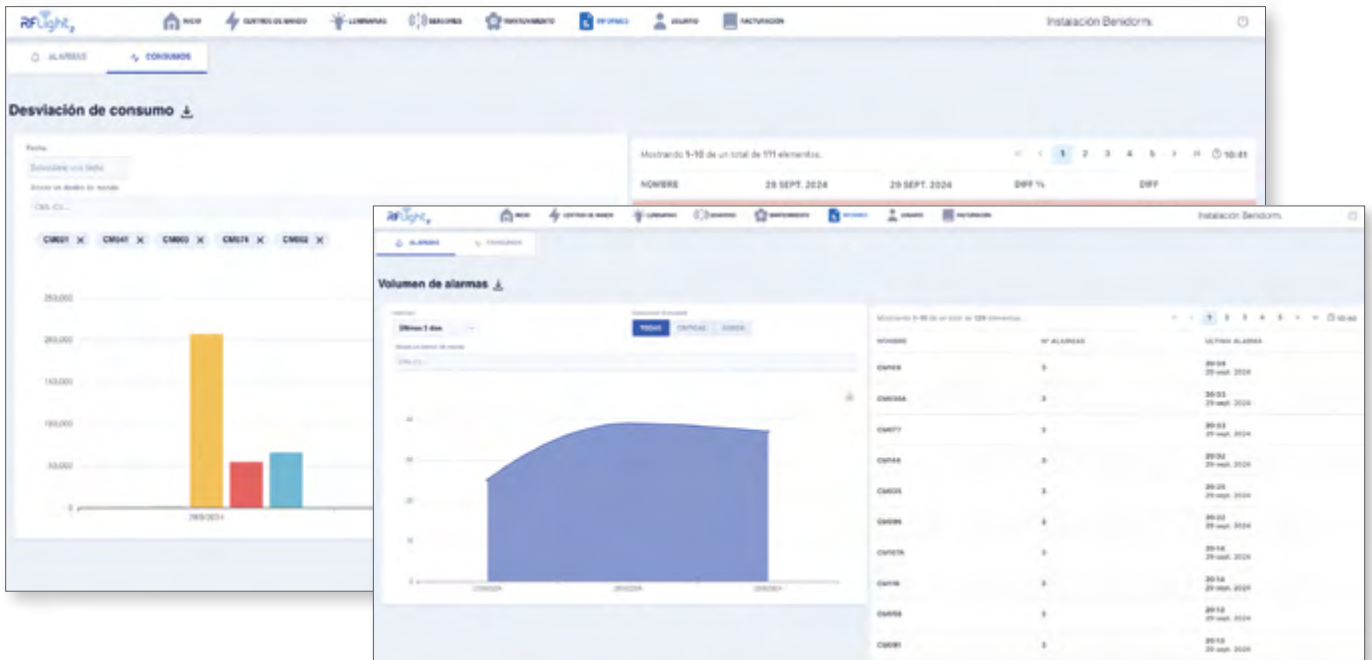
• MAINTENANCE MANAGEMENT



The RFLight₂ platform features a maintenance module for recording, monitoring and carrying out preventive and corrective tasks on the various items in the inventory. This module can be linked to public service portals or similar platforms to collect various notifications

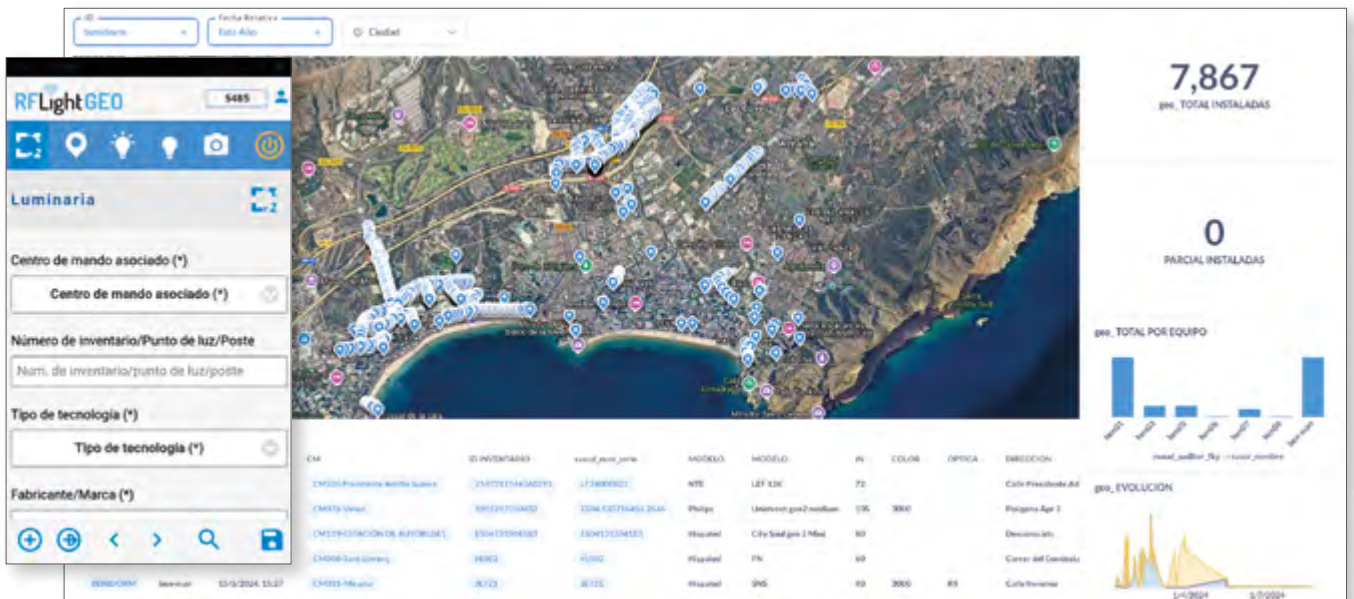
VERTICAL LIGHTING FEATURES

- REPORTING TOOL



The RFLight₂ platform provides reports on alarms and energy consumption from control centres to facilitate the analysis of this data and enable preventive action to be taken.

- RFLIGHT₂ GEO/INVENTORY INSTALLATION TOOL



The georeferencing module, known as GEO, allows users to register and locate the various items in the inventory via an app.

• IOT INTEGRATION/SMART CITY VERTICALS



Thanks to our “TALQ2” certification, the RFLight₂ platform is ready to integrate any IoT solution.

IOT / SMART CITY VERTICAL SOLUTIONS

The RFLight₂ software platform enables the integration and management of various IoT and Smart City applications as they are developed, such as:

OBJECTIVE: TO INTEGRATE VARIOUS SERVICES INTO A NETWORK



WASTE COLLECTION SYSTEMS



IRRIGATION SYSTEMS PARKS AND GARDENS



CONTAMINATION MEASUREMENT STATIONS



CCTV CAMERAS



PARKING MANAGEMENT SYSTEMS

THE RFLIGHT₂ PLATFORM IS DESIGNED TO SUPPORT ALL IOT AND SMART CITY SECTORS

RFLight GEO APP FOR THE INSTALLATION, INVENTORY AND MAINTENANCE OF LIGHT FIXTURES

The RFLight₂ Geo system enables the capture, upload and processing of data from all types of equipment, particularly electrical equipment, using any Android or iOS mobile device.

RFLight₂ Geo was founded with the aim of:

- Eliminate a significant proportion of the administrative tasks associated with the installation of equipment of any kind.
- Monitor the progress of work automatically and in real time.
- Provide tools for monitoring and managing the teams responsible for installation.



The system is very easy to use: all you need to do is scan the QR code on the streetlight or node. This allows it to be geolocated and added to a database. You can also choose to enter details for each location (height of the light, street layout, incidents, etc.)


The system includes:

- RFLight₂ Geo app for Android and iOS (available on the Play Store and App Store).
- FIELD EQUIPMENT, comprising a portable GPS device (Garmin GLO model or similar) and a 7-inch Samsung tablet or similar.

www.hispaled.es

A different city **RFLight₂**



 **hispaled**
a different vision

SPAIN
.....
HISPALED
MADRID / GALICIA

BOLIVIA
.....
LA PAZ
DELEGATION

COLOMBIA
.....
BOGOTÁ
DELEGATION

MOROCCO
.....
CASABLANCA
DELEGATION

RRSS
.....
  